

POWER FLOW OPERATION

B3E051701030A08

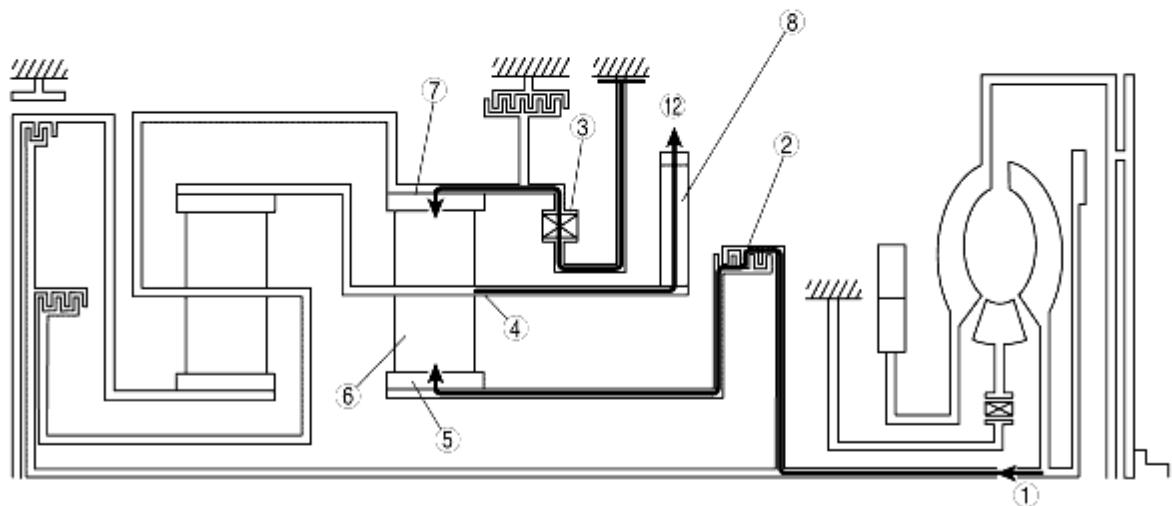
Component description

Component	Function
Forward clutch	<ul style="list-style-type: none">• Transmits the input torque from the turbine shaft to the front sun gear.• Operates in the forward range of the first, second, or third gear position.
3-4 clutch	<ul style="list-style-type: none">• Transmits the input torque from the turbine shaft to the rear planetary carrier.• Operates in the forward range of the third or fourth gear position.
Reverse clutch	<ul style="list-style-type: none">• Transmits the input torque from the turbine shaft to the rear sun gear.• Operates when the vehicle is backing up.
2-4 brake band	<ul style="list-style-type: none">• Locks rotation of the reverse drum and fixes the rear sun gear.• Operates in the second or fourth gear position.
Low and reverse brake	<ul style="list-style-type: none">• Fixes the rotation of the front internal gear.• Operates when the vehicle is backing up or in the first gear position (L range HOLD and M range).
One-way clutch	<ul style="list-style-type: none">• Locks the counterclockwise rotation of the front internal gear in the first gear position.
Planetary gear	<ul style="list-style-type: none">• The planetary gear functions as a transmission due to the engagement/ disengagement of clutches and/or brakes, converts the transmitted driving force of the turbine shaft and transmits it to the output gear.

Note

- All directions of rotation are viewed from the torque converter.

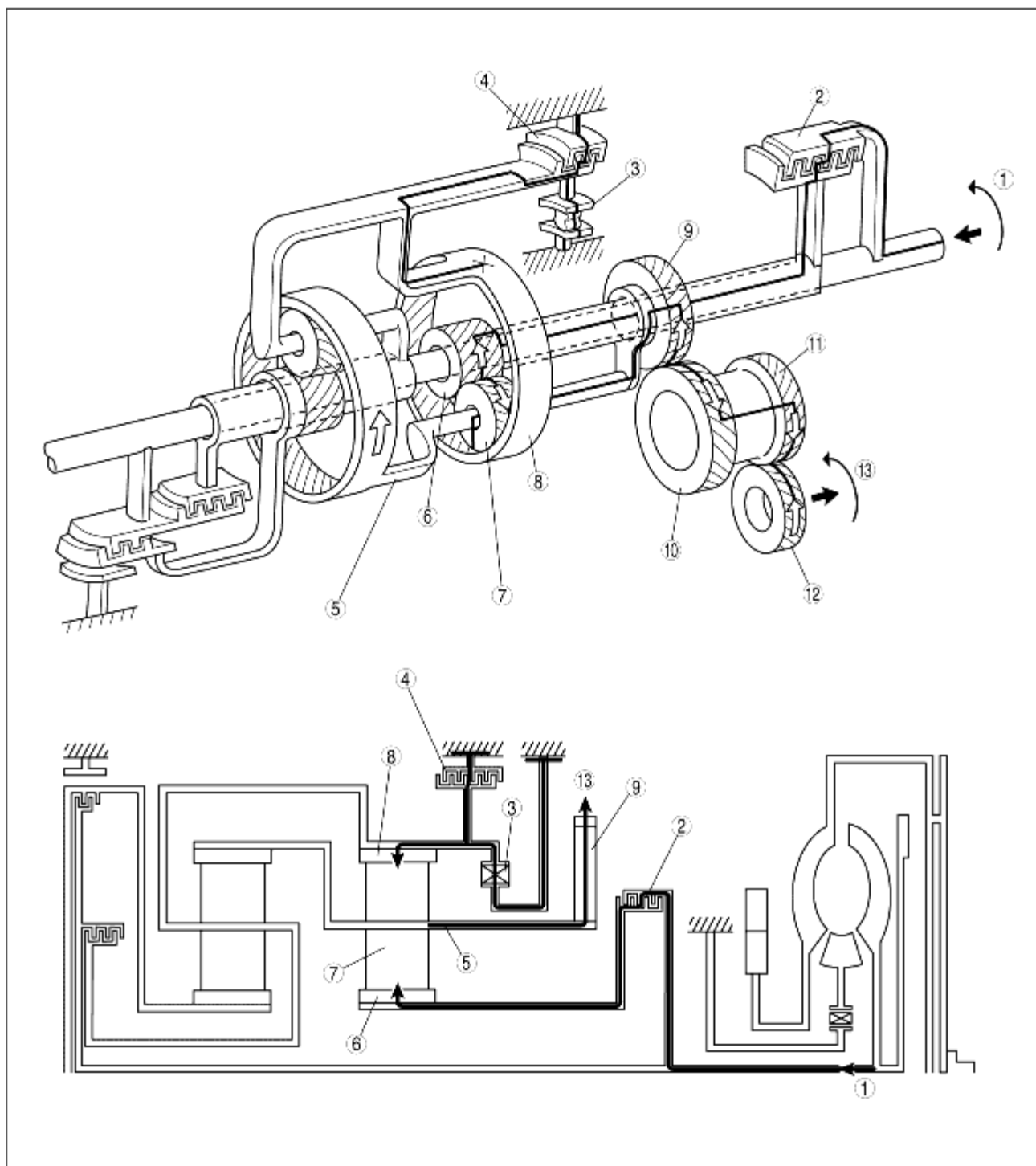
1GR (D range)



1	Input
2	Forward clutch
3	One-way clutch
4	Front planetary carrier
5	Front sun gear
6	Front pinion gear
7	Front internal gear
8	Primary gear
9	Secondary gear
10	Output gear

11	Ring gear (Differential)
12	Output

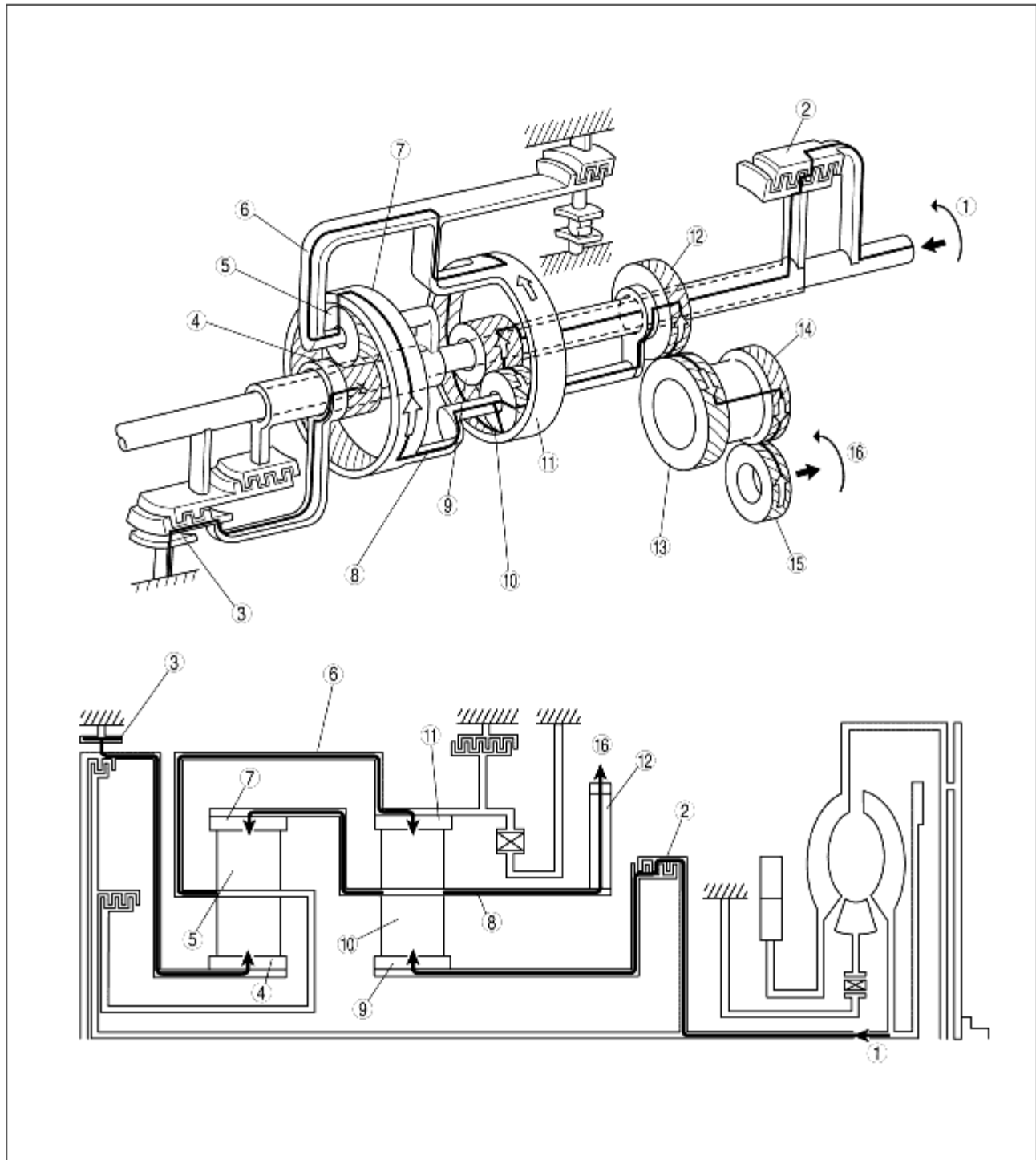
1GR (4AT: L range HOLD, Sport AT: M range)



B3E0517T006

1	Input
2	Forward clutch
3	One-way clutch
4	Low and reverse brake
5	Front planetary carrier

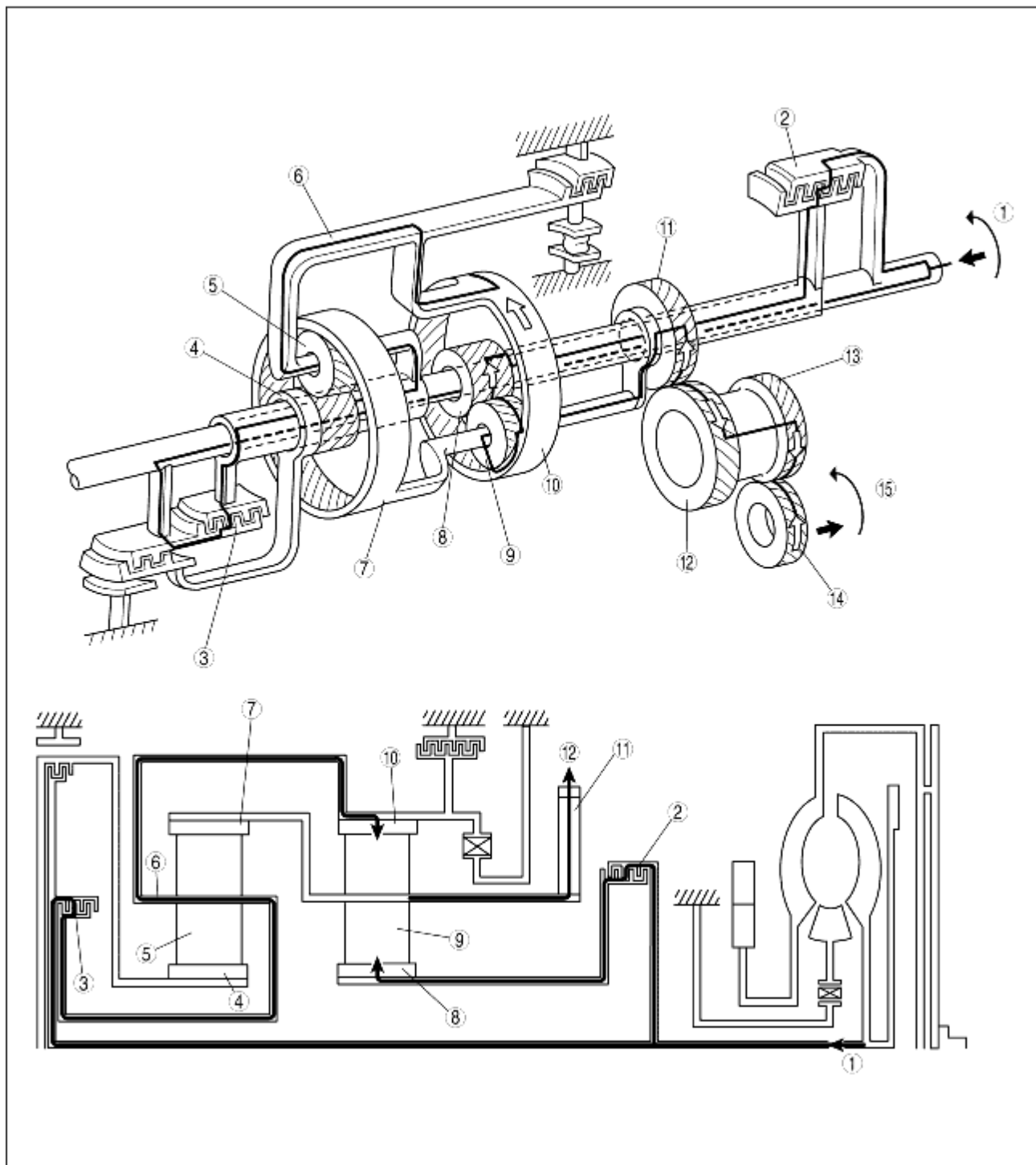
6	Front sun gear
7	Front pinion gear
8	Front internal gear
9	Primary gear
10	Secondary gear
11	Output gear
12	Ring gear (Differential)
13	Output

2GR

B3E05 17T007

1	Input
2	Forward clutch
3	2-4 brake band
4	Rear sun gear
5	Rear pinion gear
6	Rear planetary carrier
7	Rear internal gear
8	Front planetary carrier
9	Front sun gear
10	Front pinion gear
11	Front internal gear
12	Primary gear
13	Secondary gear
14	Output gear
15	Ring gear (Differential)
16	Output

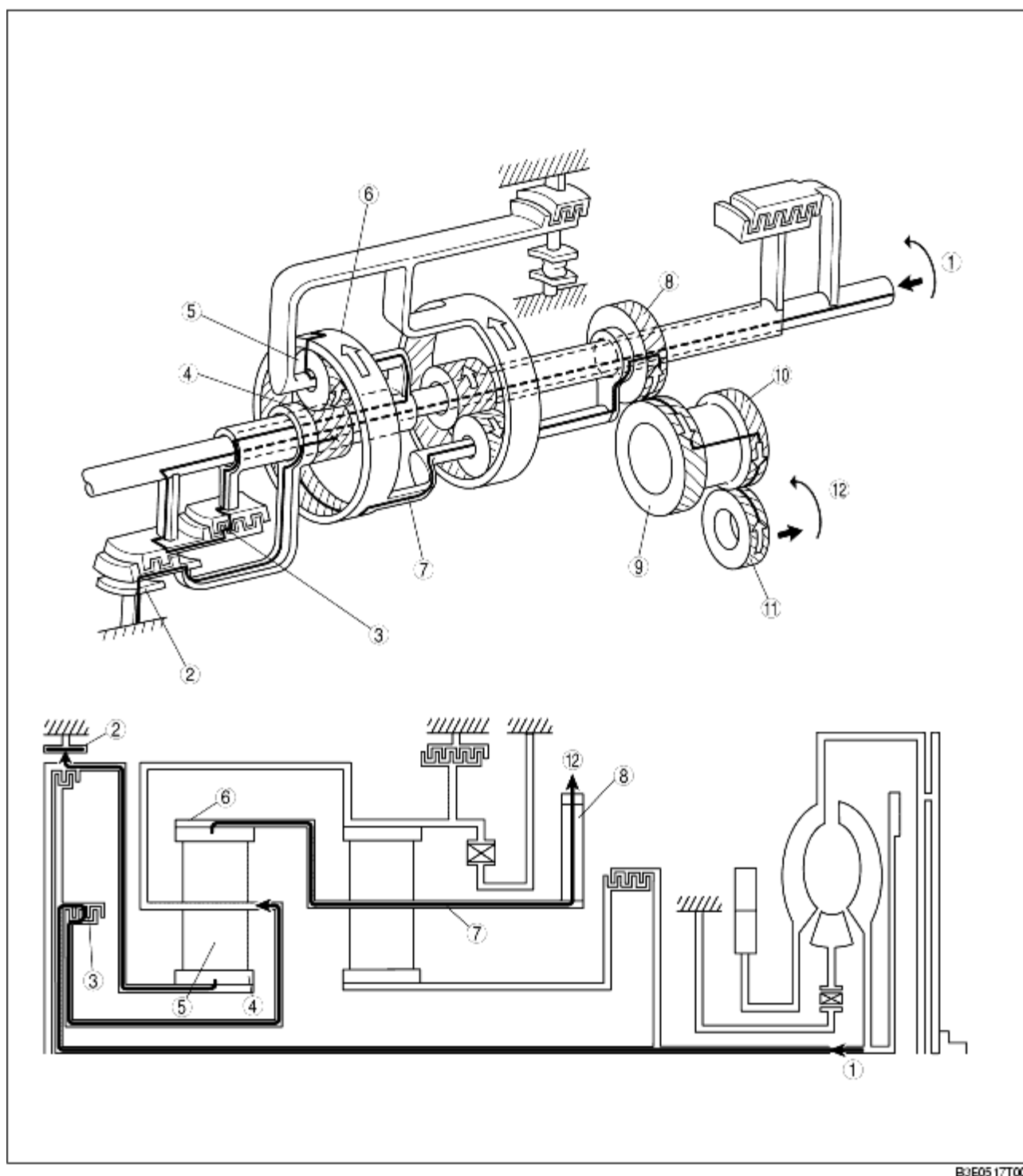
3GR



B3E05 17T008

1	Input
2	Forward clutch
3	3-4 clutch
4	Rear sun gear
5	Rear pinion gear
6	Rear planetary carrier
7	Rear internal gear
8	Front sun gear
9	Front pinion gear
10	Front internal gear

11	Primary gear
12	Secondary gear
13	Output gear
14	Ring gear (Differential)
15	Output

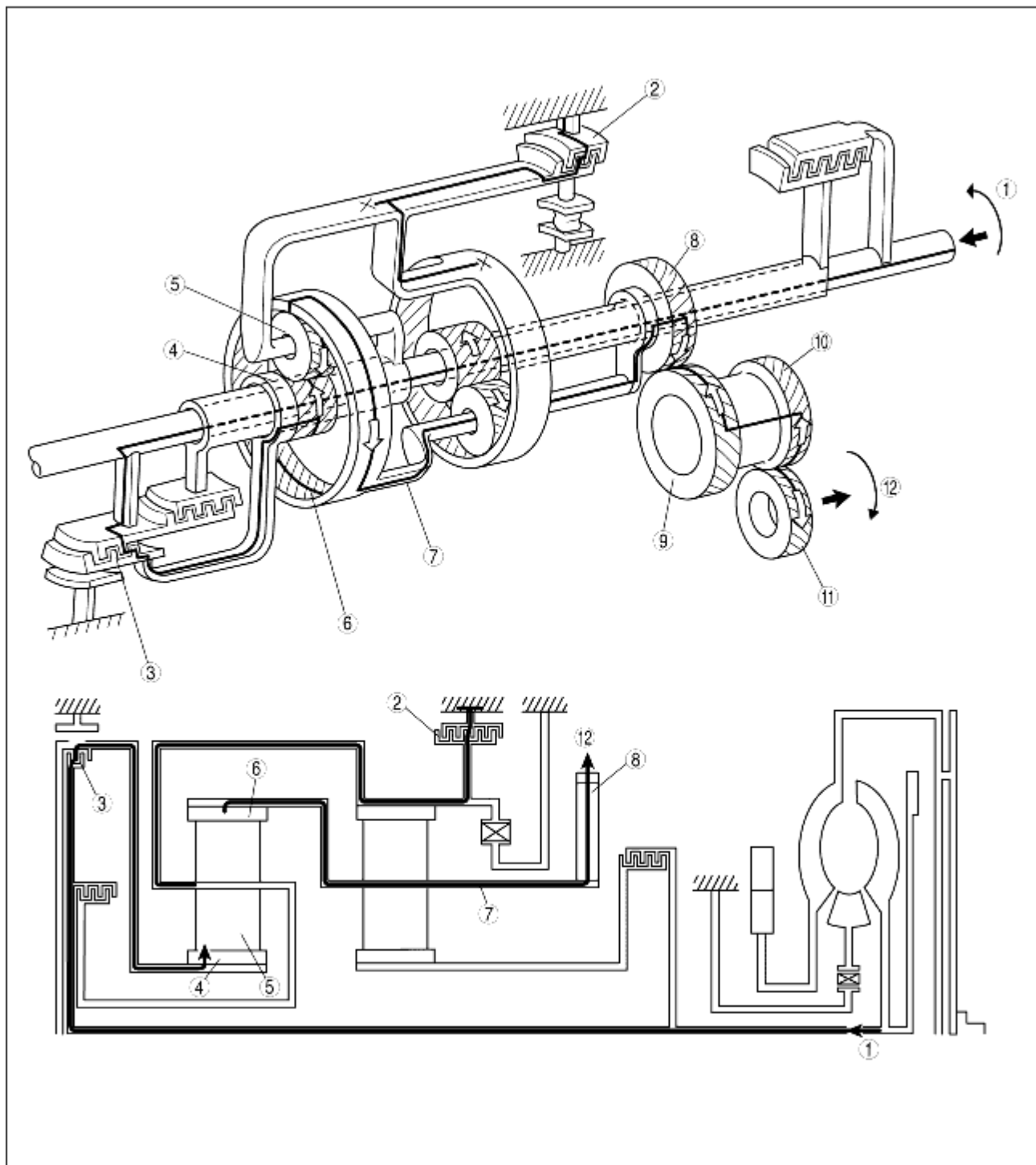
4GR

B3E05 17T009

1	Input
2	2-4 brake band

3	3-4 clutch
4	Rear sun gear
5	Rear pinion gear
6	Rear internal gear
7	Front planetary carrier
8	Primary gear
9	Secondary gear
10	Output gear
11	Ring gear (Differential)
12	Output

R position



B3E05 17T010

1	Input
2	Low and reverse brake
3	Reverse clutch
4	Rear sun gear
5	Rear pinion gear
6	Rear internal gear
7	Front planetary carrier
8	Primary gear
9	Secondary gear
10	Output gear

11	Ring gear (Differential)
12	Output